

OPERATIONS SUPERVISOR

FRONT LINE LEADER IN SAFE, EFFICIENT, PRODUCTIVE OPERATIONS



ALL OPPORTUNITIES, NO BOUNDARIES.

DHL Supply Chain is the global leader in contract logistics. With nearly 50,000 employees and almost 500 warehouses and offices in North America, DHL Supply Chain is a place that delivers growth, stability, support, and respect. If you're looking for big opportunities with a company that's as spirited, sustainable, and innovative as you are, we invite you to take a closer look at us and the role of Operations Supervisor.

WE ARE...

A world-class leader looking for world-class people. We value openness, trust, and autonomy and go to extraordinary lengths to create an upbeat, motivating, and appreciative work environment. We value and support each other, celebrate individuality, and do meaningful work that makes the world go 'round.

YOU ARE...

A talented, engaged, and energetic individual open to leading, working, and learning in and with a diverse group of people. You want to have a voice and feel valued for working hard, thinking fast, and being proactive, positive, and productive.

YOUR QUALIFICATIONS

- Bachelor's Degree
- Ambitious
- Confident
- Enthusiastic



60% supervising/coaching hourly associates, relationship management, upholds operational health, safety and quality standards



20% operational problem solving, process improvement, performance management



10% customer communications, inventory management, key performance indicator reporting



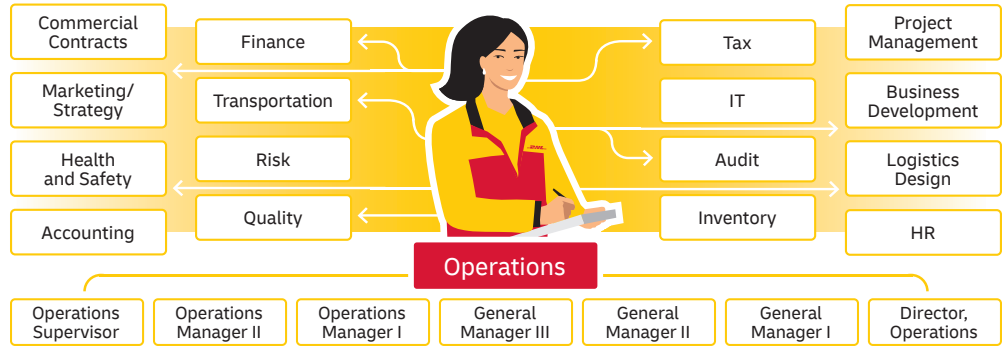
10% recruiting, hourly associate development



ONE COMPANY. HUNDREDS OF OPPORTUNITIES.

We want you to join us, stay with us, and grow with us. So, we offer on-the-job training, supportive and guiding leadership, upward mobility opportunities, and skill-building professional development. There's no better place to secure a position—and advance a career—than DHL Supply Chain.

Move into a different role, another department, or a new career.



COMMUNITY
CORPORATE CULTURE

Our culture is less formal, more inclusive, and encourages diversity in all its forms. DHL Supply Chain's open, respect-filled environment motivates all of us to excel in our work.

RESPONSIBILITY
ENVIRONMENTAL, SOCIAL, GOVERNANCE

We're pioneering the commitment to profit, people, and the planet with the most comprehensive portfolio of green logistics solutions in the industry today.

IMPACT
MEANINGFUL WORK

Our industry never stands still, and neither do we. We believe the work we do should bring value to the people and places around us today—and tomorrow.

OPEN THE DOOR TO YOUR FUTURE ...
 Scan this code to see what opportunities await you.